

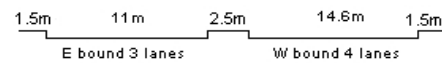
YEAR 2018

CORE STATION 5025

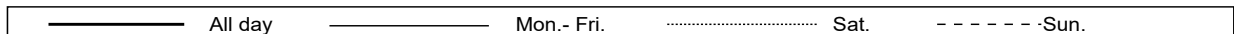
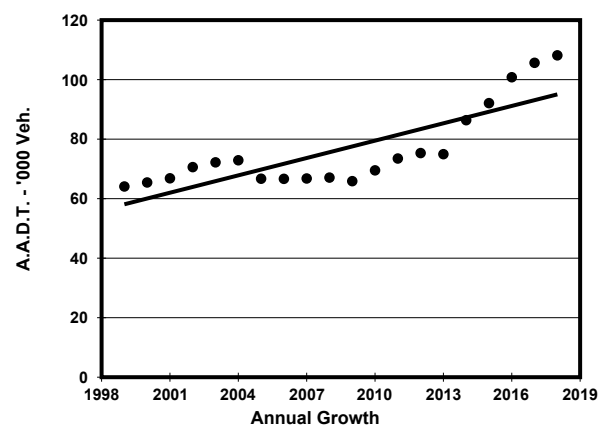
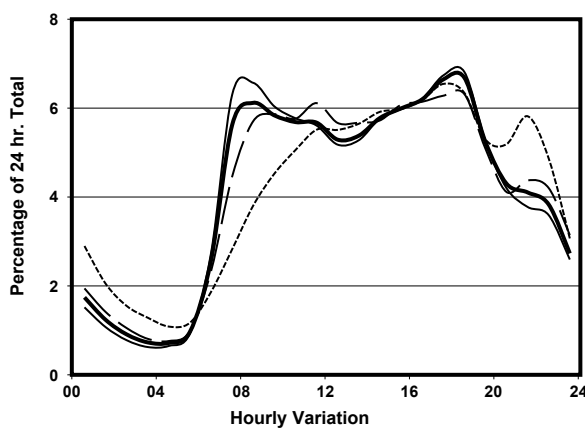
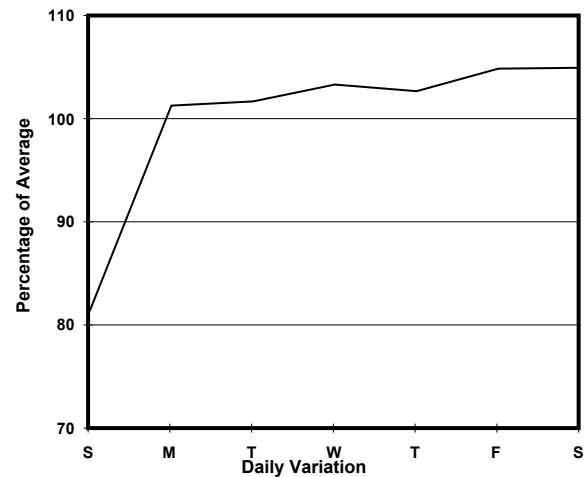
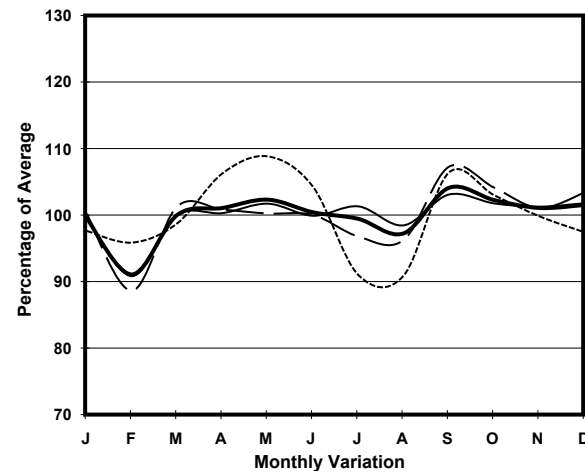
ROAD NETWORK MAJOR

ROAD TYPE EXPRESSWAY

LINK YUEN LONG HIGHWAY (from TIN SHUI WAI WEST INT to LAM TEI INT)



1. TRAFFIC FLOW VARIATION AND GROWTH



2. TRAFFIC CHARACTERISTICS (BY DIRECTION)

Parameter	All - Day	Mon. - Fri.	Sat.	Sun.
EAST BOUND				
A.A.D.T.	55540	57700	58940	45280
R 12 / 24 - %	69.9	71.4	68.8	62.1
R 16 / 24 - %	88.6	89.4	87.6	84.6
AM Peak Hour	0800-0900	0800-0900	0900-1000	0900-1000
One-way flow at AM peak hour	3380	3810	3270	1950
T - % (AM)	-	24.8	-	-
PM Peak Hour	1700-1800	1700-1800	1800-1900	1700-1800
One-way flow at PM peak hour	3760	3980	3780	2920
T - % (PM)	-	22.9	-	-
Prop.of commercial vehicles - 16 hr.	-	24.3	-	-
WEST BOUND				
A.A.D.T.	52620	54490	56000	43610
R 12 / 24 - %	71.9	73.1	70.9	65.7
R 16 / 24 - %	88.1	88.7	87.5	85.4
AM Peak Hour	0700-0800	0700-0800	0900-1000	0900-1000
One-way flow at AM peak hour	3240	3750	3460	2070
T - % (AM)	-	21.3	-	-
PM Peak Hour	1800-1900	1800-1900	1800-1900	1700-1800
One-way flow at PM peak hour	3500	3680	3480	2900
T - % (PM)	-	13.3	-	-
Prop.of commercial vehicles - 16 hr.	-	22.3	-	-

3. OTHER INFORMATION AND COMMENT

4. Vehicle classification and occupancy - Monday to Friday

Time		Class of vehicle									
		Motor Cycle	Private Car	Taxi	Private LB	PLB	Goods veh.		Non Fr. Bus	Fr. Bus	
							Light	M & H		SD	DD
0700-0800	Pro	3.0	38.1	13.6	0.7	1.9	18.9	16.3	6.1	0.1	1.3
	Ocp	1.0	1.2	2.3	4.2	13.9	1.4	1.2	9.6	28.5	25.2
0800-0900	Pro	2.3	47.4	7.7	0.5	1.8	18.0	17.7	3.6	0.1	0.8
	Ocp	1.0	1.3	2.1	3.7	15.7	1.4	1.1	14.6	26.0	30.0
0900-1000	Pro	1.1	36.6	8.1	0.5	1.6	23.3	24.2	3.2	0.1	1.3
	Ocp	1.1	1.3	2.0	3.9	16.3	1.4	1.1	14.7	21.5	15.1
1000-1100	Pro	0.9	32.2	9.4	0.9	1.2	25.1	26.1	3.0	0.1	1.2
	Ocp	1.1	1.5	1.9	1.8	12.7	1.3	1.2	22.8	29.0	22.3
1100-1200	Pro	1.3	33.7	9.6	0.7	1.3	24.3	25.5	2.3	0.1	1.3
	Ocp	1.1	1.2	2.3	1.9	13.7	1.3	1.2	17.5	18.5	22.7
1200-1300	Pro	1.3	34.1	6.2	0.7	1.5	26.0	25.3	3.8	0.1	1.2
	Ocp	1.0	1.5	1.9	1.9	12.0	1.4	1.1	15.1	25.6	19.5
1300-1400	Pro	1.3	36.0	10.2	0.3	0.9	23.1	24.8	2.1	0.1	1.0
	Ocp	1.1	1.5	2.2	3.6	14.3	1.4	1.1	12.8	32.5	24.6
1400-1500	Pro	1.0	32.6	6.3	0.4	1.3	29.5	25.1	2.8	0.1	1.0
	Ocp	1.1	1.4	2.2	1.5	10.3	1.4	1.2	14.3	32.3	27.4
1500-1600	Pro	1.1	33.0	10.9	0.9	0.9	24.5	24.3	3.2	0.1	1.0
	Ocp	1.2	1.5	2.2	2.9	14.0	1.4	1.1	12.8	33.3	30.8
1600-1700	Pro	1.4	36.5	8.5	1.1	1.1	24.7	21.7	3.7	0.1	1.2
	Ocp	1.1	1.5	2.0	2.3	14.4	1.4	1.1	17.3	32.0	29.7
1700-1800	Pro	3.2	40.7	8.5	1.1	1.6	23.1	17.4	3.1	0.1	1.3
	Ocp	1.0	1.4	2.0	2.9	15.7	1.3	1.1	17.3	29.1	27.0
1800-1900 Peak hour	Pro	3.2	56.2	9.0	0.7	1.7	15.5	9.8	3.0	0.1	1.0
	Ocp	1.0	1.4	2.3	1.7	17.8	1.3	1.0	12.5	36.0	32.7
1900-2000	Pro	1.5	60.5	8.2	0.1	2.1	13.8	8.1	4.3	0.1	1.4
	Ocp	1.1	1.4	1.9	1.5	17.6	1.3	1.1	9.2	21.3	22.0
2000-2100	Pro	2.0	61.6	11.6	0.1	1.6	9.9	6.8	4.6	0.1	1.6
	Ocp	1.0	1.2	2.2	1.0	15.5	1.3	1.1	10.4	34.3	16.8
2100-2200	Pro	2.0	61.1	9.7	0.0	2.1	11.8	8.7	2.9	0.1	1.6
	Ocp	1.2	1.3	1.9	0.0	13.7	1.3	1.0	14.3	15.0	16.0
2200-2300	Pro	2.4	61.9	13.8	0.0	1.7	8.8	7.6	2.2	0.1	1.5
	Ocp	1.2	1.3	1.9	0.0	14.7	1.2	1.1	14.4	24.0	11.3
16 hours	Pro	1.8	43.0	9.3	0.6	1.5	20.6	18.6	3.4	0.1	1.2
	Ocp	1.1	1.4	2.1	2.6	14.8	1.4	1.1	14.0	28.8	23.4

Legend

Pro. Proportion of vehicles in % (Sum may not add up to 100% due to figure rounding)*

Ocp. Average occupancy of vehicles including both driver and passengers*

M&H Medium and Heavy

***** All traffic data are collected from combined bounds except for one way traffic